

SKODA | Kodiaq



5 Year

Standard
Warranty

1 Year

SuperCare
package

10 Year

Roadside
Assistance

Discover a new kind of space

Introducing your new drive, where elegance embraces grandeur.

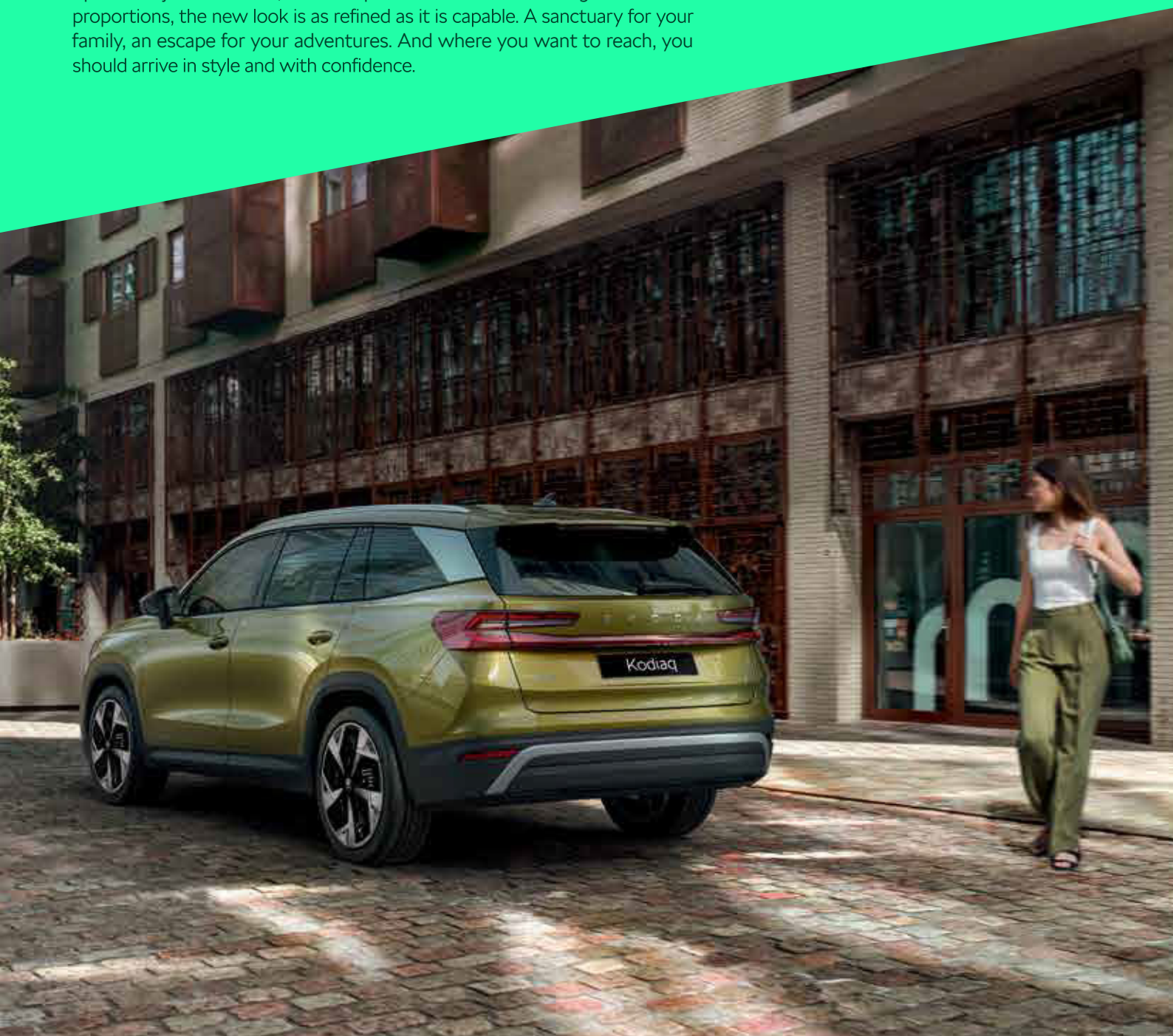
With more room in all three rows, every passenger gets the comfort they deserve. The new Ergo seats don't just support, they let you unwind, one soothing massage at a time. Smart controls put everything at your fingertips, while an intuitive infotainment system turns every drive into an experience.

The all-new Kodiaq is a sanctuary on the move. A space where elegance meets innovation.



Your space to command

Space isn't just about size, it's about presence. With bolder design and sleeker proportions, the new look is as refined as it is capable. A sanctuary for your family, an escape for your adventures. And where you want to reach, you should arrive in style and with confidence.



Bigger. Bolder. Better.

The longer length allows for a sleeker, more elegant profile, underscored by details like D-pillar in Unique Dark Chrome finish. Your family's stylish partner for exploring the world.



LED headlights

The coloured crystalline element accentuates the sharp contours of the headlights, adding a touch of elegance and visual appeal.

Front grille with horizontal light strip

To grab even more attention on the road, the new wider and bolder grille has a horizontal Light Strip. This makes the all-new Kodiaq an unmistakable sight when driving at night.

Let the sky follow you



Panoramic Sunroof

With two-piece panoramic roof, the front part can be opened electrically to allow fresh air into the cabin. The tinted glass lets in enough sunlight while still blocking harmful UV rays. For cool shade on sunny days, a sunshade can be extended electrically.

The bright shine of style



LED rear lights

The unmistakable C-shaped LED rear lights with animated indicators are connected by a full-width decorative strip.



Virtual Pedal

Full hands are not a problem anymore. With Virtual Pedal, just a swing of the foot under the bumper is enough to open the door.

KESY Advanced

Never forget to lock your car again. KESY is not only able to lock and unlock the car just by you touching the front handle in its latest iteration, it also uses the 'Open on Approach and Walk Away Locking functions', where the car automatically unlocks when approached and locks again when you walk away from it.



Space for the digital age

Digital yet tactile. Stylish yet sustainable. The all-new Škoda Kodiaq blends cutting-edge tech with timeless comfort. Recycled materials and eco-friendly leather offer luxury with a conscience. Smart Dials, large touchscreen, and ambient lighting create a space that adapts to you.



Virtual Cockpit

All the key information right in front of you. The standard 26.03 cm Virtual Cockpit offers driving data in easy-to-comprehend, customisable view.

Information. Communication. Entertainment.

Be connected to the world around. The all-new Kodiaq creates a digital environment around you, carefully curated so that what's most important is right in front of you.



Infotainment screen

The world at your fingertips. With the 32.77 cm touchscreen, the new ŠKODA Infotainment offers information and entertainment features that will make travelling a truly enjoyable experience.

Display cleaner

Screens always clean and shiny. Easily remove smudges and fingerprints from the infotainment display. Display cleaner is neatly stored in the centre console.



Ambient lighting

Adjust the style of your car's interior to suit your current mood. The ambient lighting on the dashboard and both front and rear doors can be set to any colour you like, instantly changing the overall atmosphere.



Ergo Front Seats

Comfort even on the longest drives. The Ergo seats were designed with the health of your back as top priority. To make you even more comfortable, there are heating, cooling and pneumatic massage functions.



Gear selector

Easy control, more space. Mounted on the steering column, the gear selector is right at your fingertips. Leaves the centre console free for more storage space.

Škoda Smart Dials

The best of both worlds. The Škoda Smart Dials combine the tactility of manual controls with the flexibility of touchscreens. Use the display in the middle of the dial to select a function or read information, and use the tactile dials to set the temperature, volume, or fan speed.



Two phones wireless charging

A first for Škoda: the new Kodiaq offers wireless charging for two smartphones with ventilation to prevent your devices from overheating and charging power up to 15 W per phone.



Space for seven

Even more space for your family or friends. The new larger interior offers comfortable seating in three rows with more room than ever before.



Intelligent Park Assist

Let your car find and offer you parking spaces. Select one and then just sit back and watch. The Kodiaq will autonomously drive itself into the parking space, without the driver having to touch the wheel or pedals.

Sportline



Back in black

Designed for those who want to stand out from the crowd. People with a dynamic lifestyle who want a sporty-looking car. That's the new Kodiaq Sportline. Sporty style for the whole family.



Dynamic style

A fast look for every day. The Kodiaq Sportline is easily recognisable thanks to its gloss black styling elements. Black items, such as the front grille, D-pillars, side mirrors, and roof rails, plus all the lettering, create a more streamlined and sporty look. The Sportline is also fitted with aerodynamic front bumper, body-coloured side sills, and black rear diffuser with Unique Dark Chrome trim piece.

Your place to shine

It looks cool, but it's not just about the looks. The Sportline interior was designed around the driver. The three-spoke, perforated leather multifunctional steering wheel with Sportline plaque and aluminium sports pedals are here for you to enjoy the drive.





Sports Front Seats

Wide, comfortable seats with integrated headrests and pronounced side bolsters to keep you firmly in place. The leatherette and perforated Suedia upholstery with a grey stripe in the middle completes the dynamic look.

MyŠkoda Plus App & Connectivity Dongle

Available with Sportline and Selection L&K variants

Car Assistance



View All Owned Škoda Cars

Access all the details of your vehicles in one place



Upload Car Documents

Store essential documents digitally so it's readily accessible



Dealer Locator

Locate your nearest authorized Škoda dealer with ease



Explore Škoda Accessories

Transform your drive by browsing through our range of official accessories

Service & Maintenance



Book a Service

Scheduling service appointments made even more convenient



Service Cost Calculator

Get estimates before you service



Complete Service History

Track your past services and maintenance records



Explore Service Products

Discover all our service packages and offerings, too!

Telematics



Vehicle Status

Access real-time status of your car



Vehicle Live Location

Check in on your car's exact location at any given time



Geo-Fencing

Set up custom boundaries and receive alerts accordingly

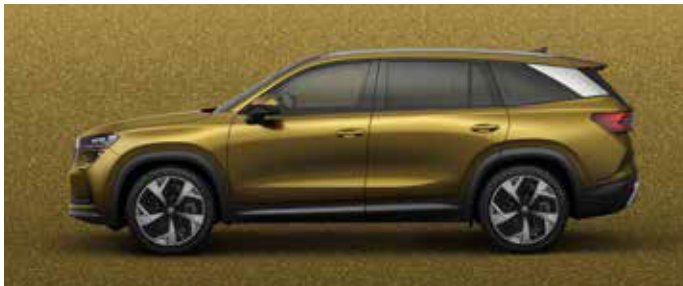


Trip Data

Access detailed trip data, logs, and travel history

Colours

*Exclusive to Selection L&K

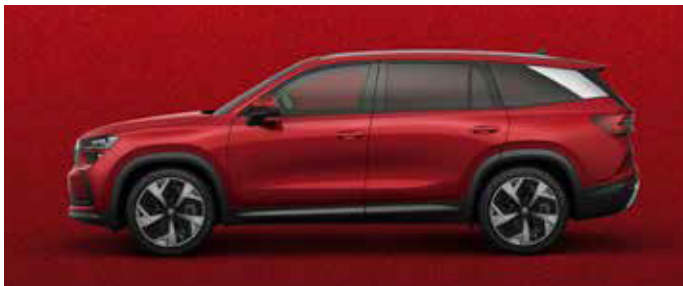


Bronx Gold metallic*

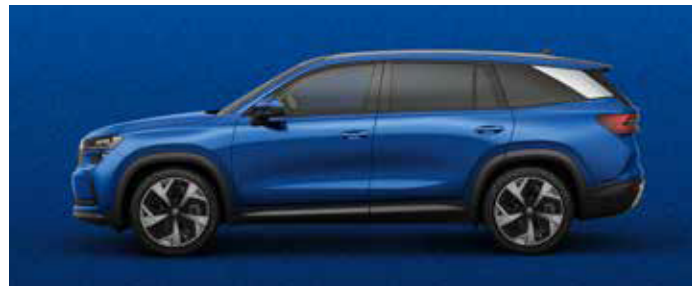
*Exclusive to Sportline



Steel Grey#



Velvet Red metallic



Race Blue metallic



Graphite Grey metallic



Magic Black metallic



Moon White metallic

Wheels



Sportline

R18 Soira alloy wheels



Selection L&K

R18 Mazeno alloy wheels
with Aero trims



Lounge

R18 Mazeno alloy wheels

Technical Specifications

Technical Description		
Engine		
Engine Type	Turbocharged Petrol	
Cylinders	4	
Displacement [cc]	1 984	
Max. power [kW at rpm]	150 / 4 500 - 6 000	
Max. torque [Nm at rpm]	320 / 1 500 - 4 400	
Fuel consumption (CMVR rule 115) [Kmpl]	14.86	
Transmission		
Wheel drive	4x4	
Type	Automatic 7-speed DSG	
Chassis		
Front axle	McPherson suspension with lower triangular links and torsion stabiliser	
Rear axle	Multi-element axle, with longitudinal and transverse links, with torsion stabiliser	
Brake - front	Disc	
Brake – rear	Disc	
Steering system	Electric Power Assisted	
Wheels	Alloy wheel 7.5J x R18	
Tyres	235/55 R18, 145/85 R18 (spare)	
Dimensions		
Length [mm]	4758	
Width [mm]	1 864	
Height [mm]	1 679	
Wheel base [mm]	2 791	
Ground clearance (laden IS-9435) [mm]	155	
Seating capacity [mm]	5 (Lounge) / 7 (Sportline, Selection L&K)	
Boot Space [l]	281 / 786 / 1 976	
Fuel Tank Capacity [l]	62	
Weights		
Kerb weight [kg]	1 765 (Lounge) / 1 820 (Sportline) / 1 825 (Selection L&K)	
Gross weight [kg]	2 390 (Lounge) / 2 420 (Sportline, Selection L&K)	

Feature List

Equipment	Lounge	Sportline	Selection L&K
Safety			
9 Airbags (2 front + 1 centre + 2 front side + 2 rear side + 2 curtain)	■	■	■
ESC (electronic stabilising system)	■	■	■
ABS (anti-lock braking system)	■	■	■
EBD (electronic brakeforce distribution)	■	■	■
MSR (engine drag torque control)	■	■	■
ASR (traction control system)	■	■	■
EDL (electronic differential lock)	■	■	■
HBA (hydraulic brake assist)	■	■	■
DSR (driver steering recommendation)	■	■	■
RBS (rain brake support)	■	■	■
ESBS (electronic stability braking system)	■	■	■
MCB (multi-collision brake)	■	■	■
XDS+ (cross differential system)	■	■	■
Isofix and TopTether system on front-passenger seat and middle row seats	■	■	■
Dual-Tone Horn	■	■	■
Advanced Driver Attention & Drowsiness Monitor	-	-	■
Pre Crash proactive passenger protection system	-	-	■
Hill Start Assist & Hill Descent Control	■	-	■
Wheels			
Alloy Wheels R(18), Soira	-	■	-
Alloy Wheels R(18), Mazeno with Aero trims	-	-	■
Spare Wheel R(18), steel space saver	■	■	■
Alloy Wheels R(18), Mazeno	■	-	-
Lights			
LED Headlights with Welcome Effect and Corner function	■	■	■
Front grill with horizontal Light Strip	-	-	■
LED Rear Lights with Welcome Effect and Dynamic Blinker	■	■	■
Exterior Mirrors with boarding spots and Škoda logo projection	■	■	■
Interior Ambient Mood Lighting in dashboard, footwell, front doors and rear doors	■	■	■

Equipment	Lounge	Sportline	Selection L&K
Exterior			
Exterior styling elements in Glossy Black	-	■	-
Exterior styling elements in matte Unique Dark Chrome	■	-	■
Roof rails	■	■	■
Glossy black window framing	■	■	■
Rear spoiler with finlets	■	■	■
Red decorative strip between rear lights	■	■	■
Sportline badge on front fenders	-	■	-
L&K badge on front fenders	-	-	■
Additional front underbody guard plus underbody stone guard	■	■	■
Interior			
Grey Suedia Fabric Interiors	■	-	-
Black Suedia Interiors	-	■	-
Cognac Leather Interiors	-	-	■
Sliding Panoramic Sunroof	■	■	■
26.03 cm Virtual Cockpit with choice of different layouts	■	■	■
Sport three-spoke leather multifunction steering wheel with shift paddles	-	■	-
Sportline badge on steering wheel	-	■	-
Two-spoke leather multifunction steering wheel with shift paddles	■	-	■
L&K badge on steering wheel	-	-	■
Aluminium Pedals	-	■	-
Scuff plates in front door apertures	■	■	■
Comfort			
Acoustic side windows in front	■	■	■
Additional acoustic insulation	■	■	■
Climatronic AC 3-zone	■	■	■
Front Driver Seat with Power Adjustment with Memory feature, Co-Driver Seat With Manual Adjustment, both seats with Heating and thigh support extender	■	-	-
Front Sports Seats with Heating, Power Adjustment with Memory feature, thigh support extender	-	■	-
Front Ergo Seats with Pneumatic Massage Function (8-programme), Ventilation, Heating, Power Adjustment with Memory feature, thigh support extender	-	-	■
Front and Rear Power Windows with Pinch Protection	■	■	■
Rolling Sunblinds for Rear Side Windows	■	■	■
Sliding and Reclining second row seats	■	■	■
Three Headrests in second row seats	■	■	■
Armrest with two cupholders in second row seats	■	■	■
Third Row Seats	-	■	■

Equipment	Lounge	Sportline	Selection L&K
Convenience			
Gear Selector on the steering column	■	■	■
Smart Dials to control multiple functions with customizable centre dial	■	■	■
Kessy Advanced keyless entry	■	■	■
40:20:40 split-folding backrests in second row	■	■	■
Remote folding pull handle in boot for second row	■	■	■
Electric Tailgate	■	-	-
Electric Tailgate with Virtual Pedal	-	■	■
Park Distance Control parking sensors front and rear with Manoeuvre Assist	■	■	■
Rear View Camera	■	■	-
360 Degree Area View Camera	-	-	■
Intelligent Park Assist	-	-	■
Exterior mirrors with memory feature, auto-dimming, power-folding/adjustable, heated	■	■	■
Frameless interior rearview mirror with auto-dimming	■	■	■
Cruise Control	■	■	■
Drive Mode Select (Eco/Normal/Sport/Offroad/Snow/Individual)	■	-	■
Infotainment & Connectivity			
New Generation Infotainment System with 26.42 cm touchscreen	■	-	-
New Generation Infotainment System with 32.77 cm touchscreen	-	■	■
Wireless Smartlink - Apple Carplay & Android Auto	■	■	■
Sound System 100W 9 Speakers	■	-	-
CANTON Sound System 725W 13 Speakers + Subwoofer	-	■	■
Wireless charging 15W for 2 Phones with ventilation	■	■	■
MyŠkoda Plus App and Connectivity Dongle	■	■	■
4x USB-C 45W sockets (2x front and 2x rear)	■	■	■
1x USB-C 15W socket in rear mirror	■	■	■
Storage			
Upper and Lower Glovebox	■	■	■
Compartment Jumbo Box with Middle Armrest in the Front including cupholder	■	■	■
Front & Rear Door Storage Compartment, including bottle holder for upto 1.5L bottle	■	■	■
Storage pockets and mobile phone pockets on the backs of the front seats	■	■	■
Storage compartment (removable) on the rear centre tunnel	■	■	■

Equipment	Lounge	Sportline	Selection L&K
Simply Clever Features			
Display Cleaner for infotainment screen	-	■	■
Parking ticket Clip	■	■	■
Umbrella holder compartment in driver door	■	■	■
Door-panel waste bins	■	■	■
Door Edge Protectors for all doors	■	■	■
Tablet Holders for rear passengers	■	■	■
Bag Hooks in boot	■	■	■
Double side carpet in boot	■	-	■
Flexible cargo element in boot	■	-	■
Net program in boot	■	-	■

SKODA

www.skoda-auto.co.in | ☎ Toll-free 18 00 27 00 260

Specifications given differ from model to model. As a part of continuous product development, Škoda always upgrades its model range with innovative features. Such features are only available in the vehicles manufactured after a particular date. Please verify the feature list with our authorised dealer. Accessories shown may not be part of standard equipment. Always insist on genuine Škoda Auto parts and accessories available at authorised sales and service centres. Information relating to colours, prices, construction, technical details and equipment was valid at the time of issuance and these are subject to changes without any prior notice. All disputes are subject to the courts in Mumbai jurisdiction only. Some images are created using computer graphics for the sole purpose of advertising. Car registration will be as per the Homologation documents. European car model shown for representation purpose and photo is shot in a country which follows left hand drive. Features and accessories shown may not be a part of standard equipment or offered in India. Actual car may vary, dark shade on the glass is due to lighting effect. Please contact nearest Škoda Authorized dealer for further details. Terms & Conditions apply.